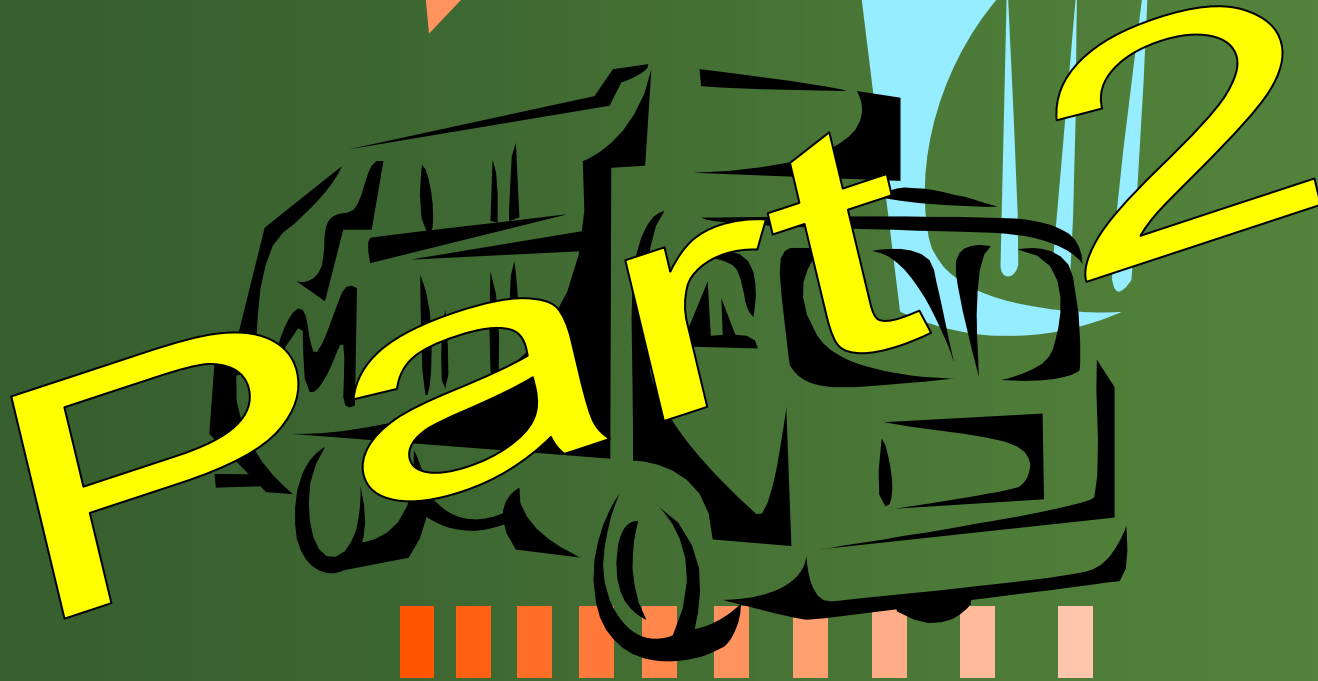




# City of Troy Residential Refuse Program

*Analysis & Recommendations*





## Agenda

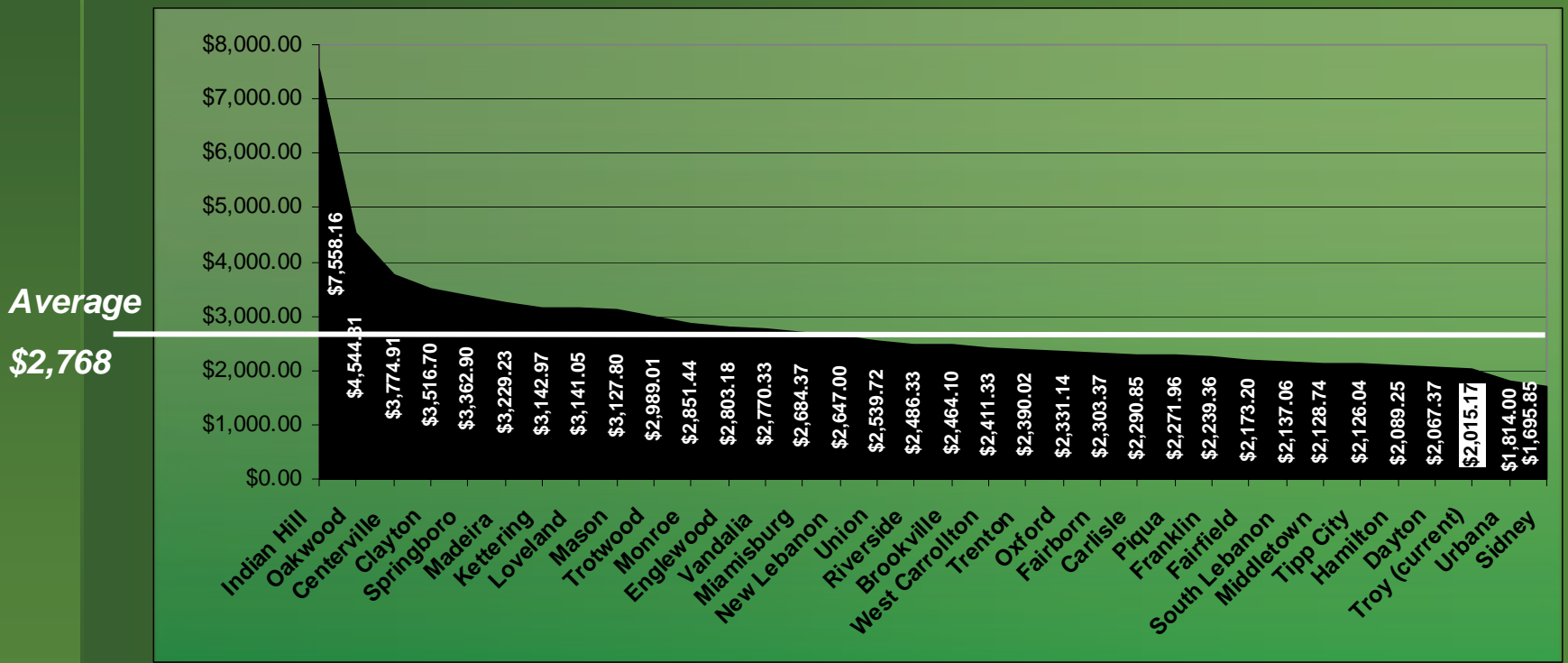
- I. What is Troy's "Quality of Life"?**
- II. What happens if the refuse fee isn't raised?**
- III. What is some good news?**



Refuse Program Recommendation

## Living with Troy's quality of life

*In a survey of 34 SW Ohio cities, Troy's current annual quality of life costs are \$753 under the average – 3<sup>rd</sup> lowest*



Source: City of Troy "Chart II: Comparison of Quality of Life Costs in SW Ohio Communities."



Refuse Program  
Recommendation

# What is Troy's "Quality of Life"?





Refuse Program  
Recommendation

What is Troy's "Quality of Life"?





Refuse Program  
Recommendation

What is Troy's "Quality of Life"?





Refuse Program  
Recommendation

What is Troy's "Quality of Life"?





Refuse Program  
Recommendation

What is Troy's "Quality of Life"?





Refuse Program  
Recommendation

What is Troy's "Quality of Life"?





Refuse Program  
Recommendation

What is Troy's "Quality of Life"?





Refuse Program  
Recommendation

## What is Troy's "Quality of Life"?





Refuse Program  
Recommendation

What is Troy's "Quality of Life"?





Refuse Program  
Recommendation

# What is Troy's "Quality of Life"?





Refuse Program  
Recommendation

## What is Troy's "Quality of Life"?





Refuse Program  
Recommendation

What is Troy's "Quality of Life"?





Refuse Program  
Recommendation

What is Troy's "Quality of Life"?





Refuse Program  
Recommendation

What is Troy's "Quality of Life"?





Refuse Program  
Recommendation

What is Troy's "Quality of Life"?





Refuse Program  
Recommendation

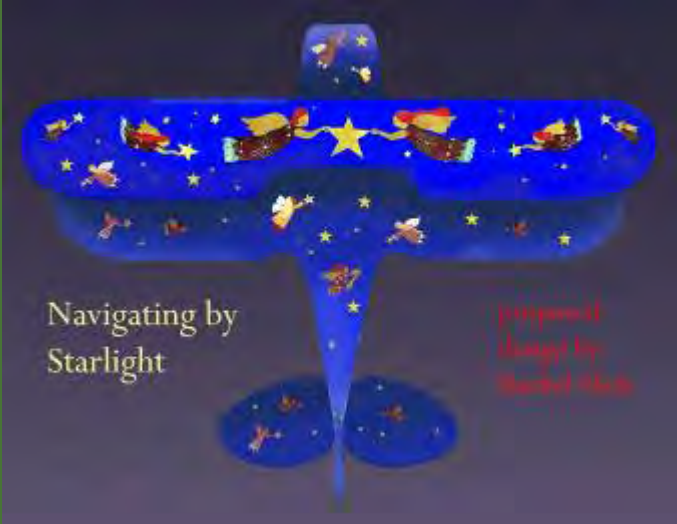
What is Troy's "Quality of Life"?





Refuse Program  
Recommendation

# What is Troy's "Quality of Life"?





Refuse Program  
Recommendation

# What is Troy's "Quality of Life"?





Refuse Program  
Recommendation

What is Troy's "Quality of Life"?





Refuse Program  
Recommendation

# What is Troy's "Quality of Life"?





Refuse Program  
Recommendation

What is Troy's "Quality of Life"?





Refuse Program  
Recommendation

What is Troy's "Quality of Life"?





Refuse Program  
Recommendation

**With no fee increase, ARE WE PREPARED TO:**

## **Close Hobart Arena**



***which would save the General Fund \$500,000 per year***



Refuse Program  
Recommendation

**With no fee increase, ARE WE PREPARED TO:**

## **Sell Riverside Cemetery**



***which would save the General Fund \$350,000 per year***



Refuse Program  
Recommendation

**With no fee increase, ARE WE PREPARED TO:**

## **Sell Miami Shores**



***which would save the General Fund \$100,000 per year***



Refuse Program  
Recommendation

**With no fee increase, ARE WE PREPARED TO:**

**Sell Troy Senior Citizens Center**



***which would save the General Fund \$50,000 one time***



**With no fee increase, ARE WE PREPARED TO:**

**Eliminate important subsidies to**

- **Main Street (\$75,000)**
- **Public Access (\$114,000)**
- **The REC (\$37,000)**

*which would save the General Fund \$226,000 per year*



Refuse Program  
Recommendation

**With no fee increase, ARE WE PREPARED TO:**

**Sell “assets in the rough”**



***which would save the GF \$100,000 or more one time***



Refuse Program  
Recommendation

**With no fee increase, ARE WE PREPARED TO:**

## Disband DARE/SRO



*which would save the General Fund \$150,000 + per year*



Refuse Program  
Recommendation

**With no fee increase, ARE WE PREPARED TO:**

**Eliminate the Bike Paramedics or  
Close a Fire Station?**



***which could save the General Fund \$30-60,000 per year***



Refuse Program  
Recommendation

**With no fee increase, ARE WE PREPARED TO:**

**Reduce code enforcement?**



***which would save the General Fund \$70,000 + per year***



Refuse Program  
Recommendation

With no fee increase, ARE WE PREPARED TO:

**Eliminate our beautification efforts?**



*which would save the General Fund \$67,000 per year*



Refuse Program  
Recommendation

**With no fee increase, ARE WE PREPARED TO:**

**Close the Dye Mill facility?**



***which would save the General Fund \$70,000 + per year***



Refuse Program  
Recommendation

**With no fee increase, ARE WE PREPARED TO:**

**Defer road repair (again)?**



***which would save the General Fund \$500,000 in 2009***



Refuse Program  
Recommendation

With no fee increase, ARE WE PREPARED TO:

**Reduce plowing & salting?**





Refuse Program  
Recommendation

With no fee increase, ARE WE PREPARED TO:





Refuse Program  
Recommendation

With no fee increase, ARE WE PREPARED TO:





## Final Conclusion

***“If services are reduced, Troy’s reputation as a quality place to live, work and visit will begin a downward spiral, affecting our ability to attract new industry, residents, and visitors, which will, in turn, severely impact our overall economic development.”***

**- Mayor Michael L. Beamish**



Refuse Program  
Recommendation

A bit of good news...

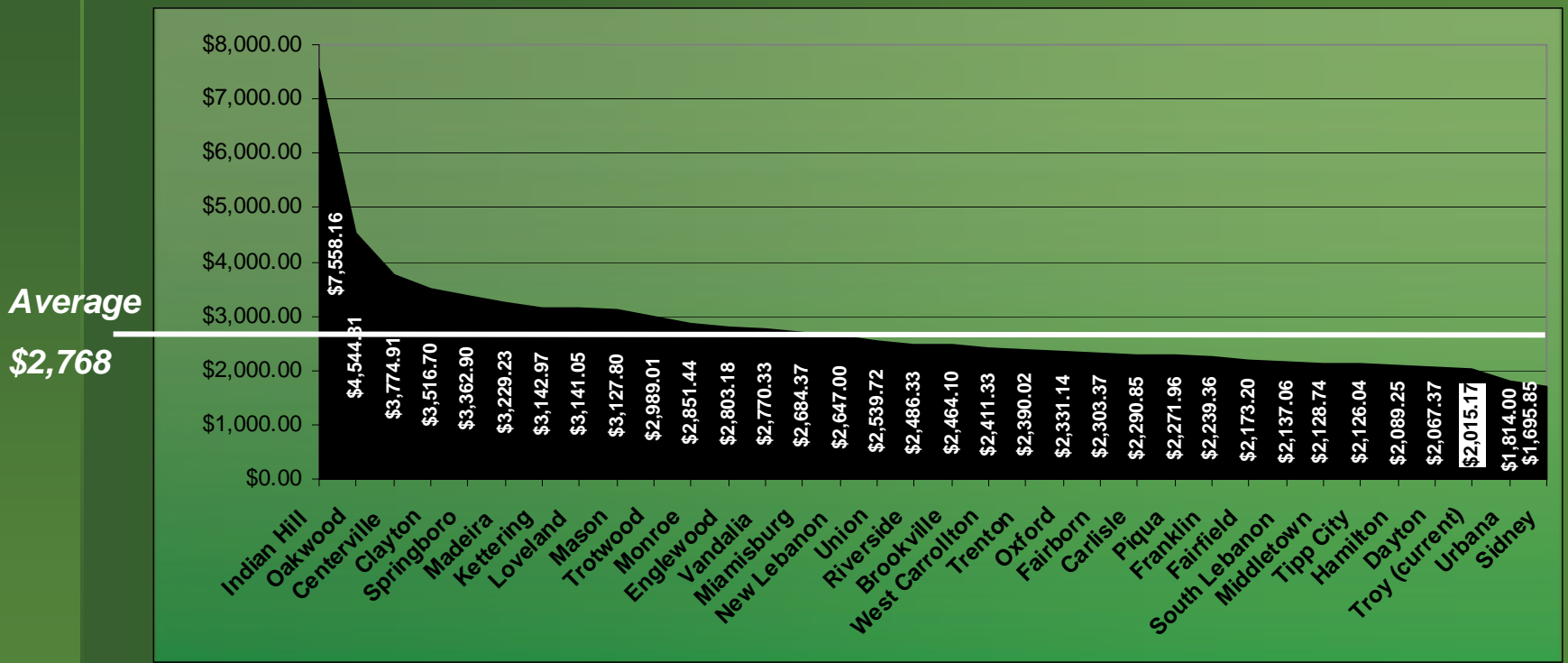




Refuse Program  
Recommendation

## Living with Troy's quality of life

*In a survey of 34 SW Ohio cities, Troy's current annual quality of life costs are \$753 under the average – 3<sup>rd</sup> lowest*



Source: City of Troy "Chart II: Comparison of Quality of Life Costs in SW Ohio Communities."